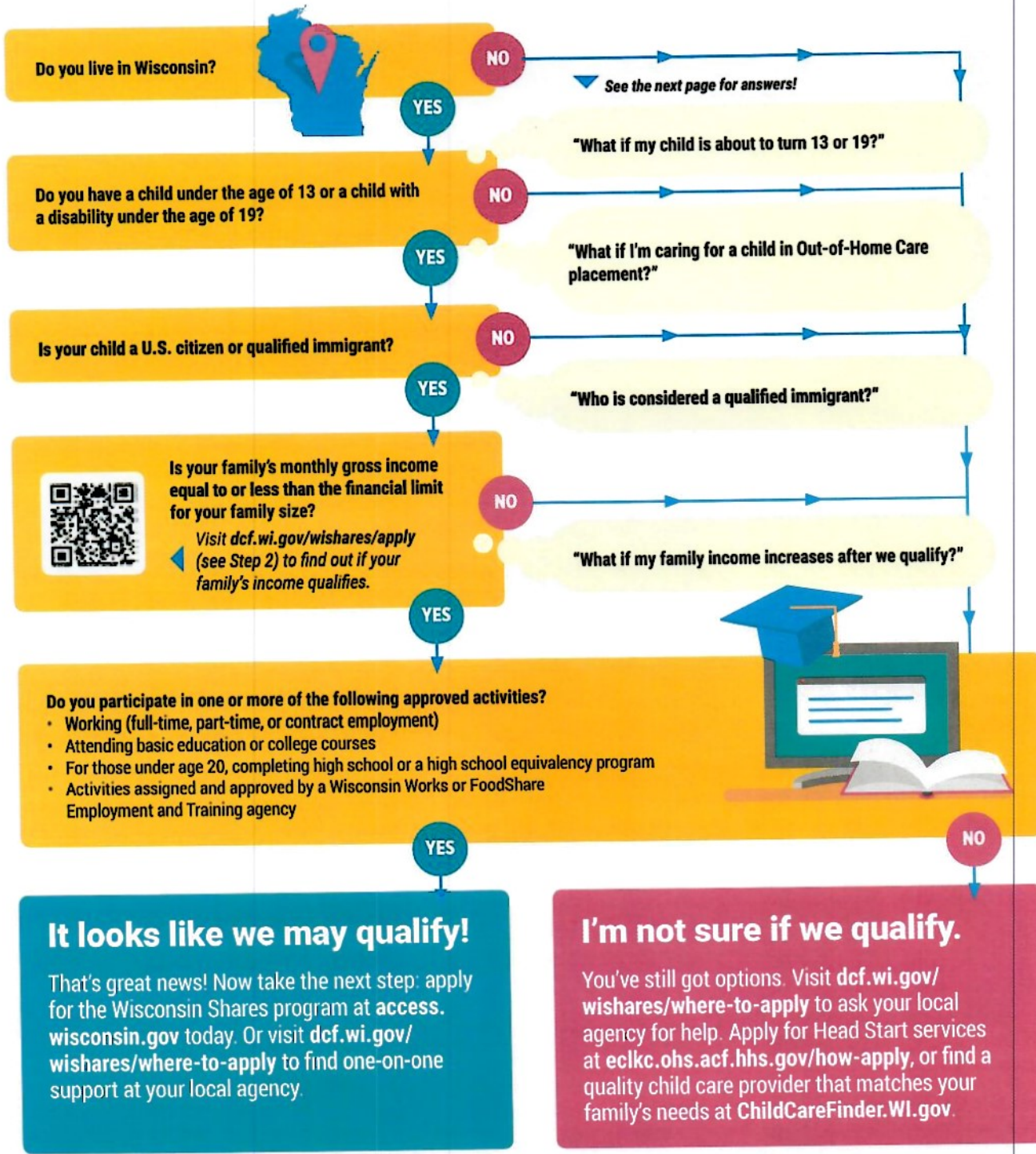


# Is my family eligible for Wisconsin Shares?

With help from the Wisconsin Shares child care subsidy program, Wisconsin families get the financial support they need to provide kids with high-quality child care—all while going to work, getting an education, and more. Thousands of families get help paying for child care every year. You could, too.



**It looks like we may qualify!**

That's great news! Now take the next step: apply for the Wisconsin Shares program at [access.wisconsin.gov](https://access.wisconsin.gov) today. Or visit [dcf.wi.gov/wishares/where-to-apply](https://dcf.wi.gov/wishares/where-to-apply) to find one-on-one support at your local agency.

**I'm not sure if we qualify.**

You've still got options. Visit [dcf.wi.gov/wishares/where-to-apply](https://dcf.wi.gov/wishares/where-to-apply) to ask your local agency for help. Apply for Head Start services at [eclkc.ohs.acf.hhs.gov/how-apply](https://eclkc.ohs.acf.hhs.gov/how-apply), or find a quality child care provider that matches your family's needs at [ChildCareFinder.WI.gov](https://ChildCareFinder.WI.gov).



[WIShares.WI.gov](https://WIShares.WI.gov)

# Get answers to families' most common eligibility questions.



## What if my child is about to turn 13 or 19?

Wisconsin Shares will review your eligibility every 12 months. Once you're approved, you will receive child care assistance until the end of your 12-month eligibility period—even if your child turns 13 or 19 during those 12 months.

## What if I'm caring for a child in an Out-of-Home Care placement?

Wisconsin Shares helps those caring for children in out-of-home placements. The income limits for caregivers who are not biological or adoptive parents are different. Foster care, guardianship, and voluntary or court-appointed kinship caregivers can learn more at [dcf.wi.gov/files/publications/pdf/5248.pdf](https://dcf.wi.gov/files/publications/pdf/5248.pdf).



## Who is considered a qualified immigrant?

Qualified immigrants include lawful permanent residents, asylees or withholding of deportation/removal grantees, conditional entrants, refugees, and those paroled by the U.S. Department of Homeland Security.

## What if my family income increases after I qualify?

You may earn up to 85% of the state median income level for your family size and remain eligible.



Visit [dcf.wi.gov/wishares/apply](https://dcf.wi.gov/wishares/apply) (see Step 2) to find out if your family's income qualifies.



Want to learn more about the Wisconsin Shares child care subsidy program? Visit [dcf.wi.gov/wishares/parents](https://dcf.wi.gov/wishares/parents) today.

The Department of Children and Families is an equal opportunity employer and service provider. If you have a disability and need to access services, receive information in an alternate format, or need information translated to another language, please call the Division of Early Care and Education at 608-422-6002. Individuals who are deaf, hard of hearing, deaf-blind or speech disabled can use the free Wisconsin Relay service by dialing 711 to contact the department.